

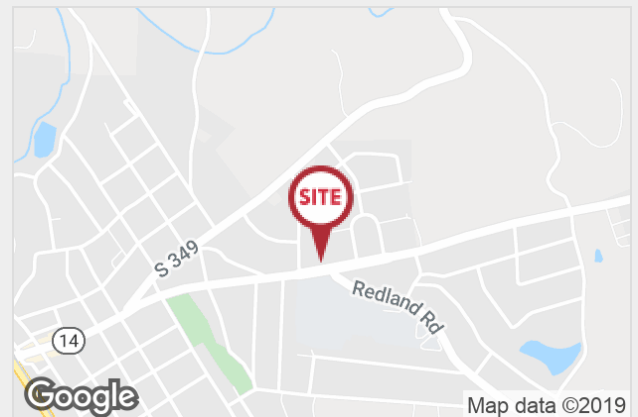


1105 E. Rutherford St. (SC Hwy 14)

1105 E. Rutherford St., Landrum, SC 29356

Property Features

- 320' on E. Rutherford St.
- 198' on West Briarcliff Dr.
- Level topography
- All public utilities
- Subject to City of Landrum Zoning and Gateway Design Overlay District
- Property taxes \$1,214.86 (2016)
- Excellent visibility
- Residential rental home on property (±1,769 SF)
- Spartanburg County Tax Map: 1-08-02-067.00



SALE PRICE: **\$380,000**

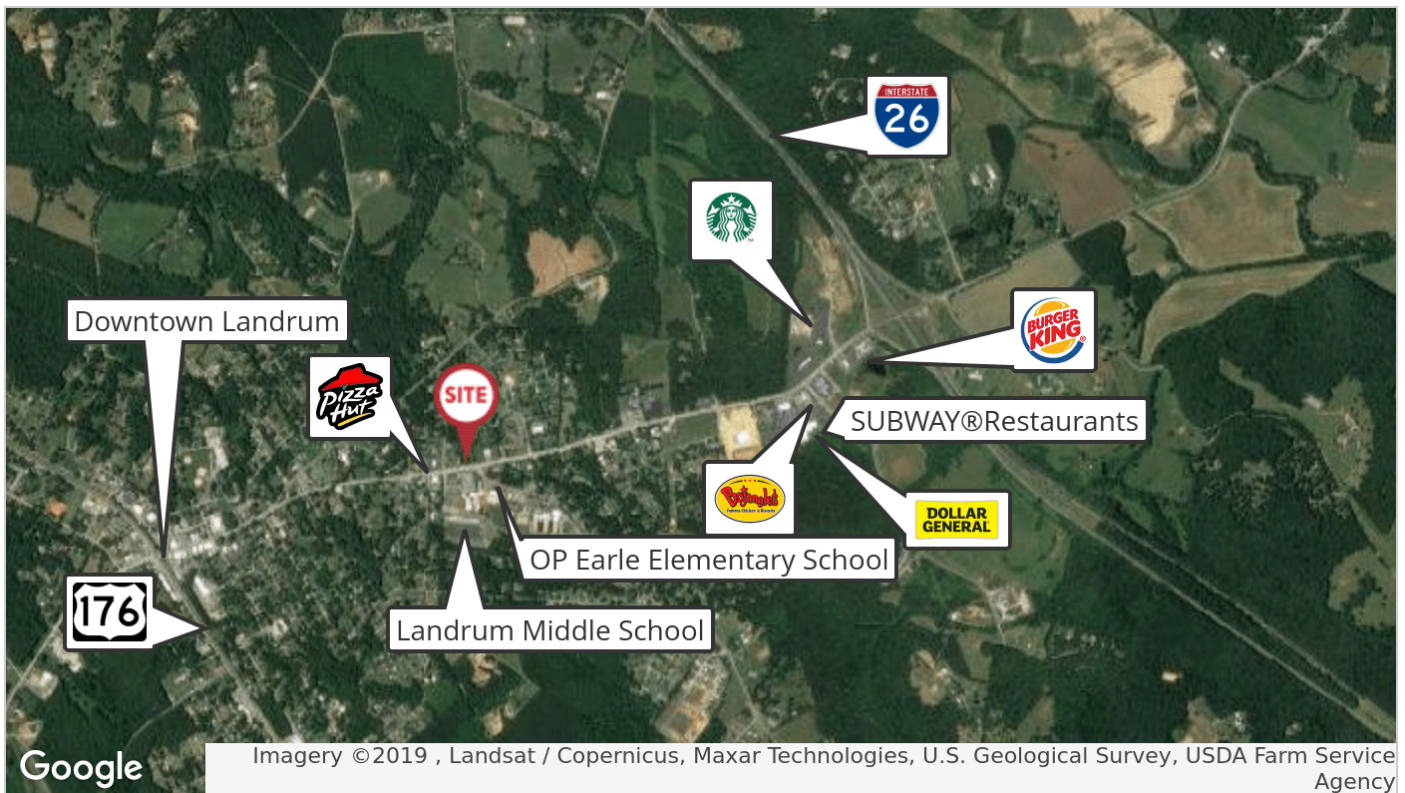
LOT SIZE: **2.3 Acres**

For more information:

Stuart Smith

864 398 4444 • stuartsmith@naiearlefurman.com

For Sale
1105 E. Rutherford St. (SC Hwy
14)



For Sale
 1105 E. Rutherford St. (SC Hwy
 14)

